

Coast Guard drills through hull: 4 'OK'...

'Everything's gone': In Abaco Islands, lives...

Trump's new math: Inside the plan to flip...

More GOP challengers take aim at Trump

Big Ben' word an

## QUARTZ

# The finding of the oldest human skull changes evolution science

Hester Hanegraef 1 day ago



Video by Reuters

The recent discovery of a 3.8m-year-old cranium (skull without the lower jaw) is the hottest topic of conversation among palaeoanthropologists right now. But fossils are found all the time, so why is the cranium of this small, old man so important? It turns out the discovery is changing our view of how early hominin species evolved – and how they led to humans. To understand how, let's start at the beginning.

In 1995, researchers found several partial jaws, isolated teeth and limb bones in Kenya, dated between 4.2m and 3.9m years old, and assigned them to a brand new species: *Australopithecus anamensis*. All these fossils were found in sediments associated with an ancient lake – "anam", which means lake in the local language. A number of additional specimens were then found in Ethiopia, thought to belong to the same species.

The primitive features of *A. anamensis* have led to the widespread view that this species is the ancestor of *Australopithecus afarensis*, a younger hominin from Tanzania, Ethiopia and perhaps Kenya, dated between 3.8m and 3m years old. The most iconic fossil of *A. afarensis* is probably the partial skeleton known as Lucy, which was for a long time viewed as the oldest known human ancestor.

Ad **TOPICS FOR YOU**

No Sugar Added Ice Cream

Rheumatoid Arthritis Symptoms

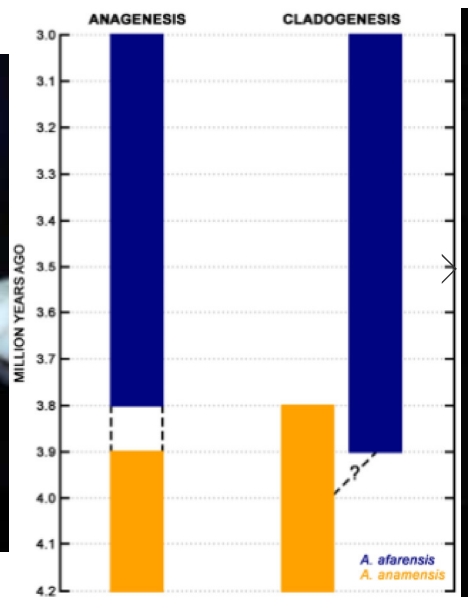
The newly discovered cranium, nicknamed “MRD” after its collection number MRD-VP-1/1, shows many similarities to the already existing *A. anamensis* specimens, and was therefore assigned to this species. However, the MRD cranium was intact enough to allow scientists to analyse for the first time the complete face and braincase, and examine parts of the cranium that were still missing in the fossil record of *A. anamensis*.

The authors discovered several new morphological features in the MRD cranium that are conventionally considered to be characteristic of younger species on the human lineage. The depth of the palate, for example, exceeds that of all known *A. anamensis* and *A. afarensis* specimens, and even is among the deepest palates of later

*Australopithecus* species. This challenges the long and widely-held view that Lucy’s species evolved gradually from *A. anamensis* without branching of the evolutionary line – a process known as anagenesis.

Since these modern features were already present in the older species, the most likely scenario is that Lucy’s species formed by evolutionary divergence from *A. anamensis* – a process known as cladogenesis. It is not known though exactly when *A. afarensis* diverged. Further evidence for cladogenesis comes from a 3.9m years old frontal bone (part of the forehead) from Ethiopia, discovered in 1981. Its shape is different from MRD which suggests this fossil probably belongs to *A. afarensis*.

If that is the case, then we need to revise the human evolutionary timeline, with *A. anamensis* existing from 4.2m to 3.8m years ago, and *A. afarensis* from 3.9m to 3m years ago. This would imply that both species were overlapping for at least 100,000 years, making it impossible for *A. afarensis* to have evolved gradually from one single ancestral group. In fact, it is becoming increasingly obvious that most species on our evolutionary lineage likely evolved by branching off from existing groups.



Full screen

1/4 SLIDES © Provided by Atlantic Media, Inc.

## The human line

The new discovery also challenges the idea of Lucy's species being the ancestor of all later *Australopithecus* hominins, which eventually led to humans.

A vertically straight and steeply rising curvature of the cheekbone has traditionally been considered to be a relatively modern feature. It was present in *Australopithecus africanus* (3.7m-2.1m years ago from southern Africa, considered by some to be a direct ancestor of the *Homo* lineage) and in *Paranthropus* (2.7m-1.2m years ago from southern and eastern Africa, not directly on our evolutionary line).

MRD. Jennifer Taylor, courtesy of the Cleveland Museum of Natural History.

The opposite condition – a low and arched cheekbone – is considered to be primitive, and is shared among *A. afarensis*, *Ardipithecus ramidus* (4.3m-4.5m years ago from Ethiopia, a more ape-like primitive hominin) and African apes.

The crest of the MRD cranium, which is surprisingly modern, now challenges this view. It further opens up the possibility that the longstanding idea of *A. afarensis* as the ancestor of all later *Australopithecus* groups might have been wrong, and that instead *A. anamensis* is the ancestor to these younger species. Which early hominin is the direct ancestor of humans still remains an unanswered question.

Clearly this latest discovery has given new insights into our evolutionary past, but also increased the complexity of the relationships between early hominins. The mid Pliocene (5.3m-2.6m years ago) has become crowded with multiple, contemporary and geographically widespread species.

Clarifying the relationships between these species, confidently characterising their morphology, and deciphering the complex and intricate story about hominin evolution is not a simple task. Specimens at each new site capture a different point along the evolutionary trajectory, but it is not easy to convert these findings into stable and reliable branches on an evolutionary tree.

More specimens from time periods and geographical locations that are currently underrepresented in the fossil record could help to settle these questions, but could equally turn everything we know upside down.

Discoveries all over the world in the last decade have led to a complete rethinking of our evolutionary past. It shows that new fossils do not always support existing hypotheses, and that we must be prepared to change our views and formulate new theories based on the evidence at hand.

Hester Hanegraef, PhD Candidate of Anthropology, *Natural History Museum*

This article is republished from The Conversation under a Creative Commons license. Read the original article.

*Microsoft may earn an Affiliate Commission if you purchase something through recommended links in this article.*

---

Ad **TOPICS FOR YOU**

Top Convertible Cars

Vegan Meals Delivered

Split AC Installation



## MORE FOR YOU



These Are Most Loyal Dog Breeds

Ad [lively.com](#)



40 Vinyl Records That Are Worth A Fortune Today

Ad [Finance101](#)



© 2019 Microsoft



[Privacy & Cookies](#) [Terms of use](#) ...